

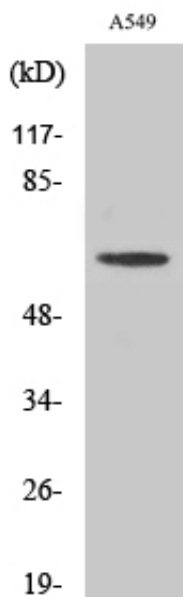


# AGBL4 Polyclonal Antibody

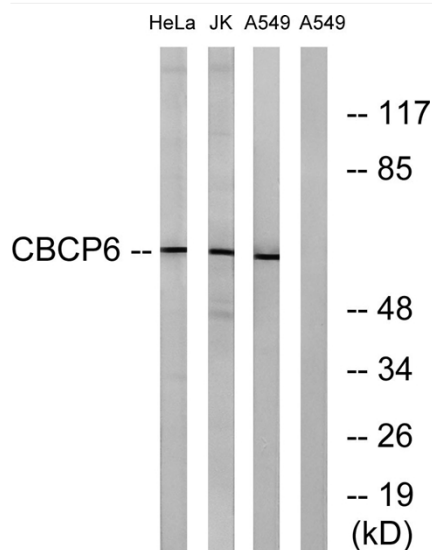
<b>Catalog No</b>	YP-Ab-16125
<b>Isotype</b>	IgG
<b>Reactivity</b>	Human;Rat;Mouse;
<b>Applications</b>	WB;ELISA
<b>Gene Name</b>	AGBL4
<b>Protein Name</b>	Cytosolic carboxypeptidase 6
<b>Immunogen</b>	The antiserum was produced against synthesized peptide derived from human AGBL4. AA range:431-480
<b>Specificity</b>	AGBL4 Polyclonal Antibody detects endogenous levels of AGBL4 protein.
<b>Formulation</b>	Liquid in PBS containing 50% glycerol, 0.5% BSA and 0.02% sodium azide.
<b>Source</b>	Polyclonal, Rabbit,IgG
<b>Purification</b>	The antibody was affinity-purified from rabbit antiserum by affinity-chromatography using epitope-specific immunogen.
<b>Dilution</b>	Western Blot: 1/500 - 1/2000. ELISA: 1/20000. Not yet tested in other applications.
<b>Concentration</b>	1 mg/ml
<b>Purity</b>	≥90%
<b>Storage Stability</b>	-20°C/1 year
<b>Synonyms</b>	AGBL4; CCP6; Cytosolic carboxypeptidase 6; ATP/GTP-binding protein-like 4
<b>Observed Band</b>	62kD
<b>Cell Pathway</b>	Cytoplasm, cytosol . Cytoplasm, cytoskeleton, microtubule organizing center, centrosome, centriole . Golgi apparatus . Cytoplasm, cytoskeleton, cilium basal body . Colocalizes with gamma-tubulin in the centrioles at interphase and dividing cells and with glutamylated tubulin in basal bodies of ciliated cells. .
<b>Tissue Specificity</b>	Brain,Whole embryo,
<b>Function</b>	cofactor: Binds 1 zinc ion per subunit.,function: May play a role in the processing of tubulin.,similarity: Belongs to the peptidase M14 family.,
<b>Background</b>	cofactor: Binds 1 zinc ion per subunit.,function: May play a role in the processing of tubulin.,similarity: Belongs to the peptidase M14 family.,
<b>matters needing attention</b>	Avoid repeated freezing and thawing!
<b>Usage suggestions</b>	This product can be used in immunological reaction related experiments. For more information, please consult technical personnel.



## Products Images



Western Blot analysis of various cells using AGLB4 Polyclonal Antibody



Western blot analysis of lysates from A549, HeLa, and Jurkat cells, using AGLB4 Antibody. The lane on the right is blocked with the synthesized peptide.